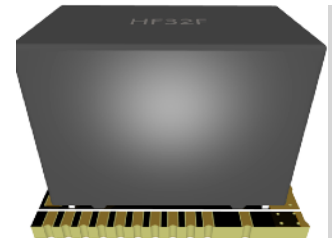
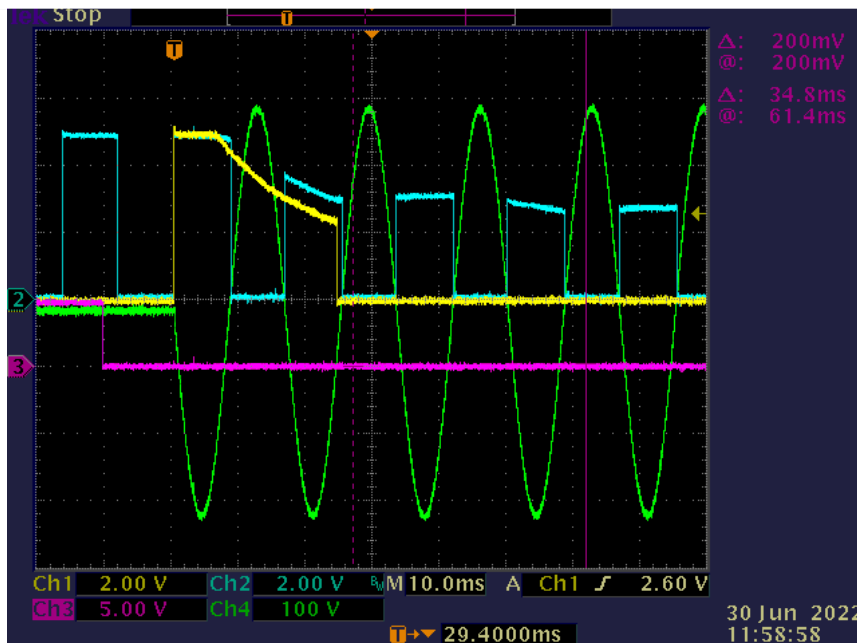
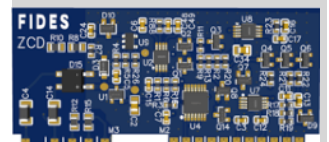


FIDES

MAGNETIC ZERO-CROSS LATCHING RELAY



380V / 50A
Latching relay 1P
ZVC DRIVER



Sustainable AC
zero crossing
driver

FIDES zero voltage technology

Zero cross latching magnet relay for MCCB

Sustainable AC On/Off system supports synchronized zero crossing contact driving technology with active AC-DC smoothing filter for MCCB.

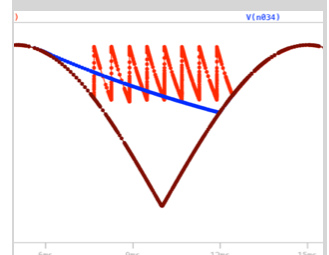
Built-in OTP(Over Temperature Protect), OCP(Over Current Protect) with internal AC-DC power supply.

IEC62301-1 Standby power supports(Under 50mW@220V/60Hz).

Isolated bi-directional control support(>8KV)

No-Load Consumption Score Chart	
Inverter + real energy efficient	
★★★★★	≤0.03W
★★★★	>0.03 to 0.15W
★★★	>0.15 to 0.25W
★★	>0.25 to 0.35W
★	>0.35 to 0.5W
No stars	>0.5W

IEC62301-1
Standby power
<50mW 220V/
60Hz



Active smooth
filter

1
MCCB
Under 800A/380V
Order made under 1KV

2
EVSE
Level II
Quick Charger

3
SMART CITY
Sustainable AC electric
switch by IoT

FIDES mechanical relay

FIDES-HDMR

Fides relay are supports zero crossing On/Off and selectable OCP(Over Current Protection), OTP(Over Temperature Protection), meets IEC62301-2 standby power with AC-DC power supply active smooth filter for increased durability.

Precision OCP(Over Current Protection) are easy variable setting.

Accurate sensor OTP(Over Temperature Protection)sensor are supports fire safety.

Easy to application optocoupler isolated remote control communication support.

Zero cross switching influence are great reduce any load inrush current, anti contact ARC melting with flutter.

- Trip time less 200uS
- Surge and noise resistant and EMI free
- No EMI noise and inrush current suppressed
- Contact resistance less 10mΩ
- Electrical life 1×10^5 IEC 60947-2
- Mechanical life (On/Off durability) 1×10^5 IEC 60947-2

- Load current A to 50A (Over 100A(Special order))
 - Rapid response(synchronized zero crossing at turn on)
 - No leakage current(less 600uA)
 - Over load Protection(50A@220V)
 - Zero crossing supports (Avoid electric arcs even during vibration)
 - Exquisite programmable overload type support
 - No contact arcs and contact weld resistance.
 - Optical isolation communication On/Off
 - Instant setting Class A, B, C, D, K and Z Type or any desired OCP
 - Over temperature detection.
- Wide operating temperature -40~+85°C

Features

EVSE Level II Anyone! Anywhere!

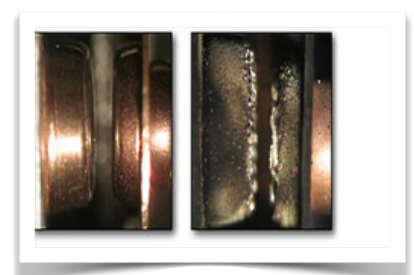
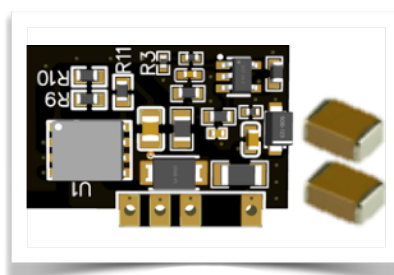
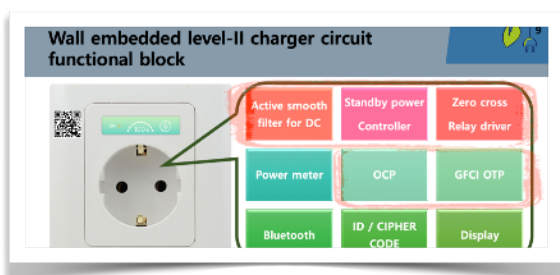
Direct replacement outlet

Automatic bills electricity

Billing is [meter icon] - Built-in electricity meter = Home electricity bill [house icon]

Anyone! Anywhere Charging!

Sustainable public wall-mounted electric vehicle charger 16A/32A are one of solution for EVSE problems.



CONTACT

info@standbyzero.org

<http://www.standbyzero.com>